



# MONTHLY MEMBERSHIP PROGRESS REPORT

District 2 S1

Results as of: 02/28/2019

GMT: GREGORY GILLIAM

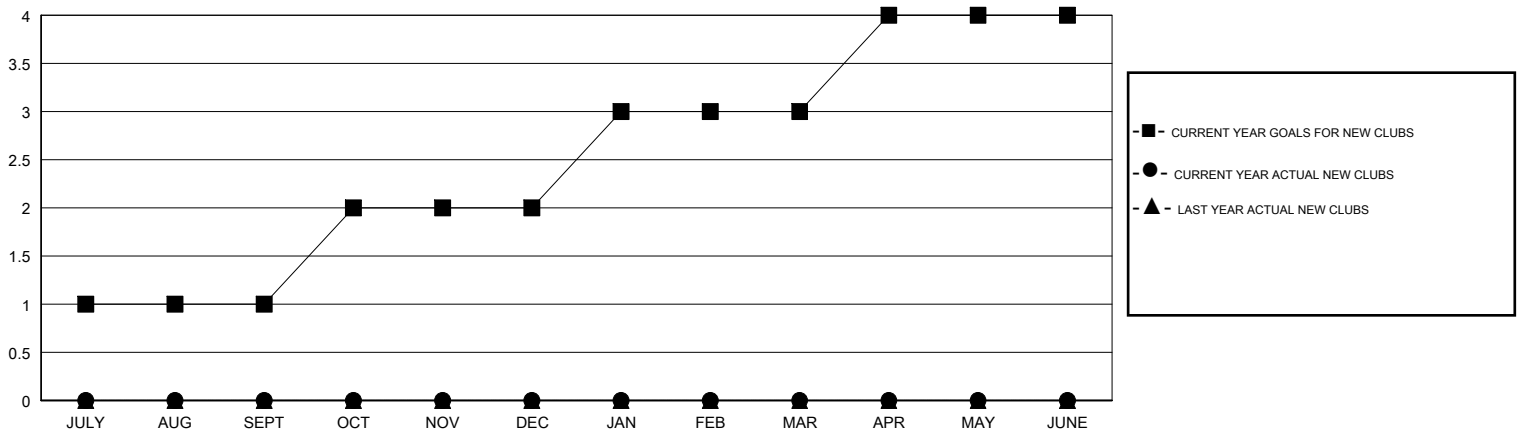
LOCATION TEXAS

GMT CA

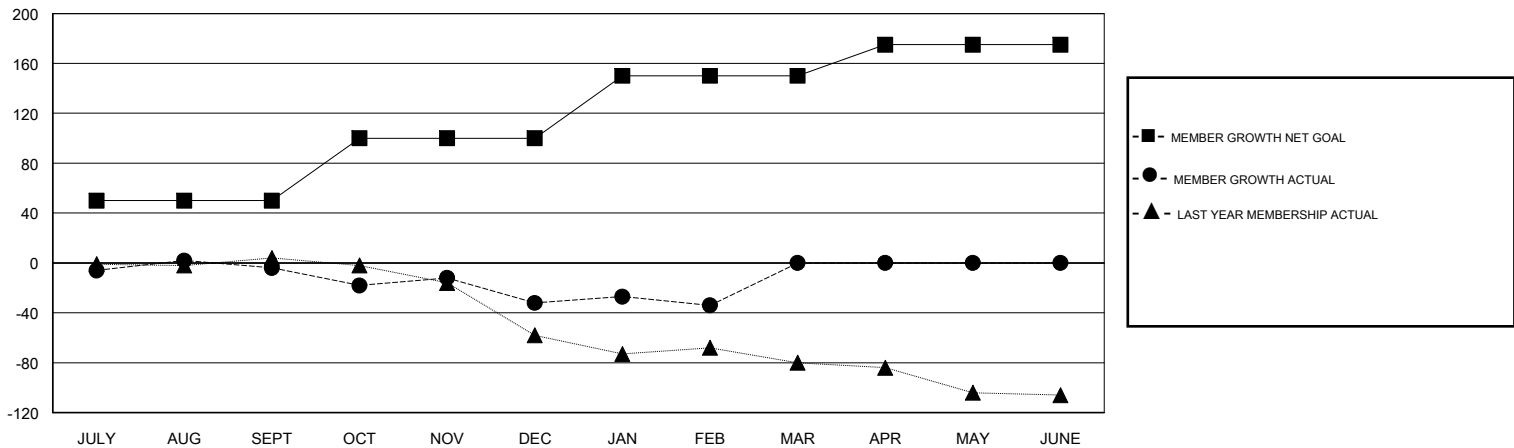
Clubs			
RESULTS FOR 2018-2019			
QUARTER	NEW CLUB GOAL	NEW CLUBS	DROPPED CLUBS
JULY/AUG/SEPT	1	0	2
OCT/NOV/DEC	1	0	1
JAN/FEB/MAR	1	0	0
APR/MAY/JUNE	1	0	0

Members			
RESULTS FOR 2018-2019			
QUARTER	MEMBER GROWTH NET GOAL	MEMBER GROWTH ACTUAL	DROPPED MEMBERS ACTUAL (including transfers)
JULY/AUG/SEPT	50	55	56
OCT/NOV/DEC	50	40	63
JAN/FEB/MAR	50	35	35
APR/MAY/JUNE	25	0	0

GOALS AND ACTUAL NEW CLUBS CUMULATIVE



GOALS AND ACTUAL MEMBERS CUMULATIVE



<b>DROPPED CLUBS: 3</b>
-------------------------

31 CLUBS OF 49 ADDED 1 OR MORE NEW MEMBERS

GENDER DISTRIBUTION	
MALE	1,191 (74.21%)
FEMALE	414 (25.79%)
Women Percentage Fiscal Year Goal: 29%	

DROPPED MEMBERS	
DECEASED	13
CLUB CANCELLED	18
OTHER	123
<b>TOTAL</b>	<b>154</b>

[CLICK HERE FOR CUMULATIVE MEMBERSHIP DATA](#)

TOTAL FAMILY UNIT MEMBERS	190
FAMILY MEMBERS PAYING HALF DUES	97